

Equa® XR

High-performance ergonomic work chair

Assembly instructions



A Herman Miller® Original

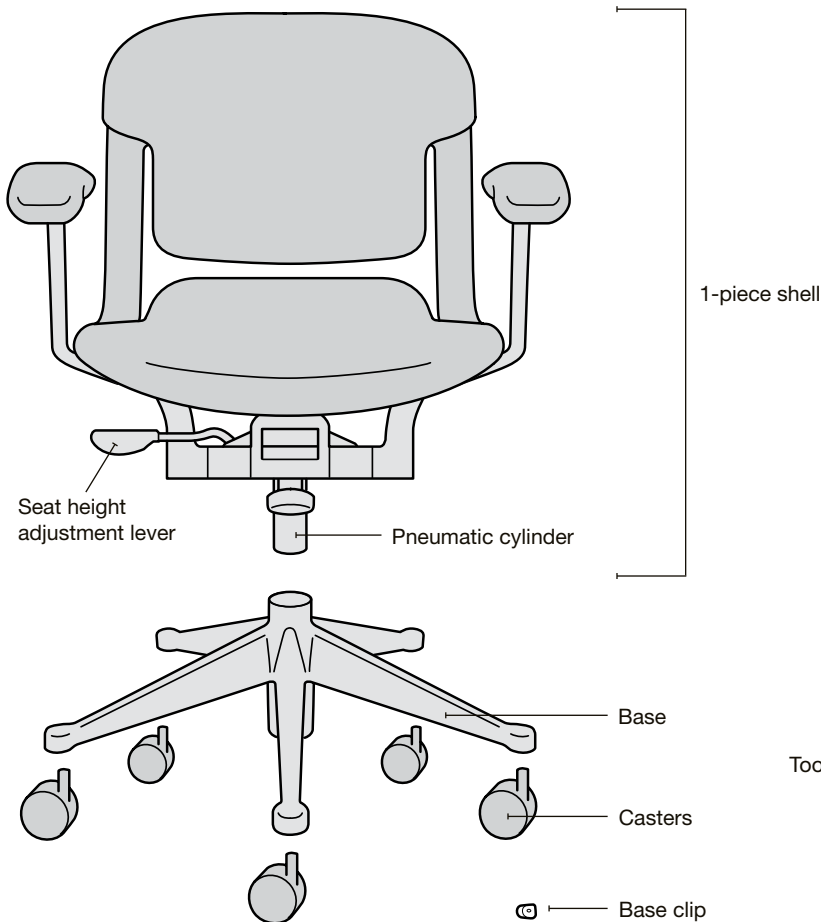
For proper assembly, it's important to read through the instructions for all 4 steps and follow them carefully. The assembly process is quick, but we're not timing you. Speed is less important than getting it right.

Notice:

Some of the parts have been wrapped to protect them during shipping. Remove the plastic wrap before assembling the chair.

Questions?

Email us at costcosupport@hermanmiller.com or call 1-800-525-8164.

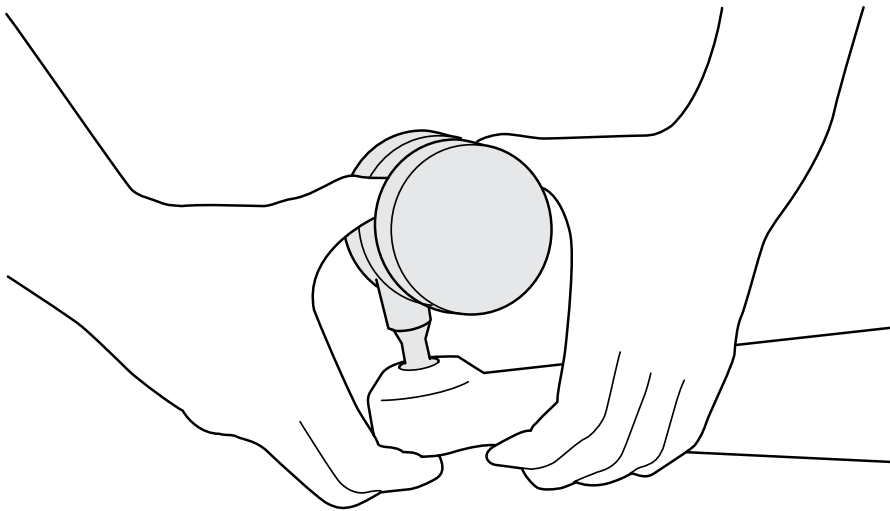


Tools needed: None

Step 1

Pop the casters into the base.

This works best when you hold the base as shown and push down with your thumbs on the center of each caster, on the flat space between the wheels. The casters pop right in with this method, and your fingers won't get pinched in the process.

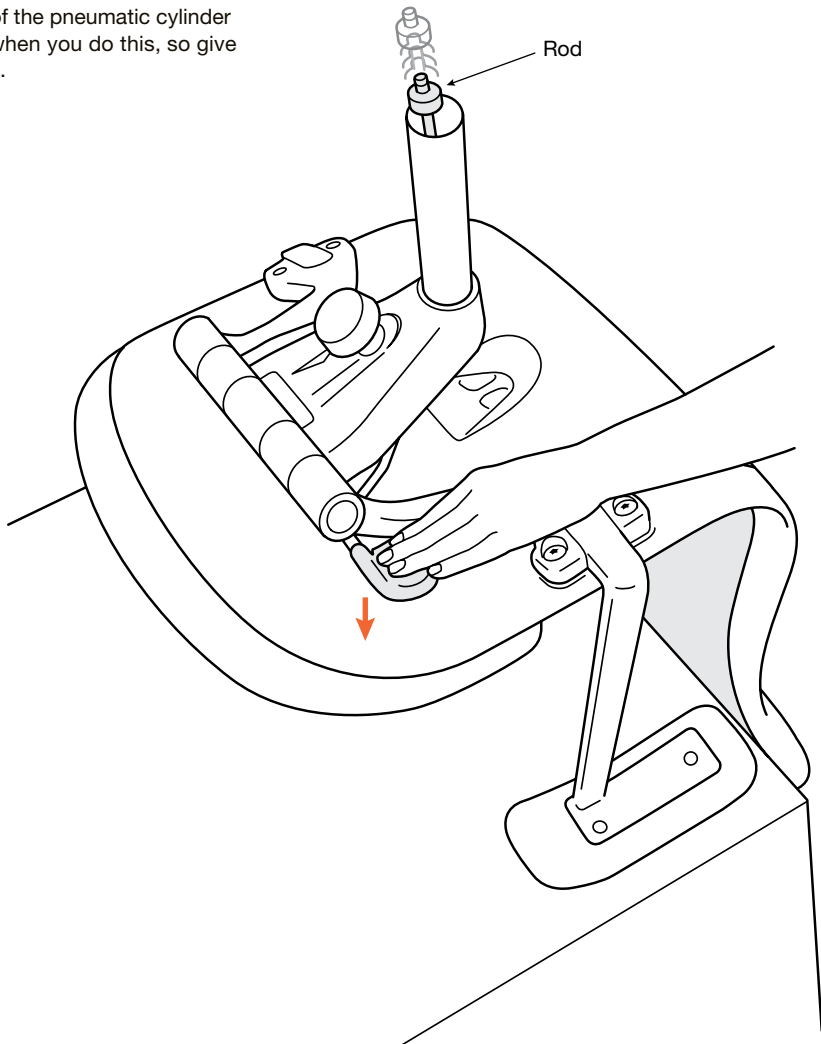


Step 2

Prepare the 1-piece shell.

Place the shell of the chair upside down on a low table or on top of the box. Set it on its arm pads so the seat is parallel to the floor and the back rests against the edge of the table or the side of the box.

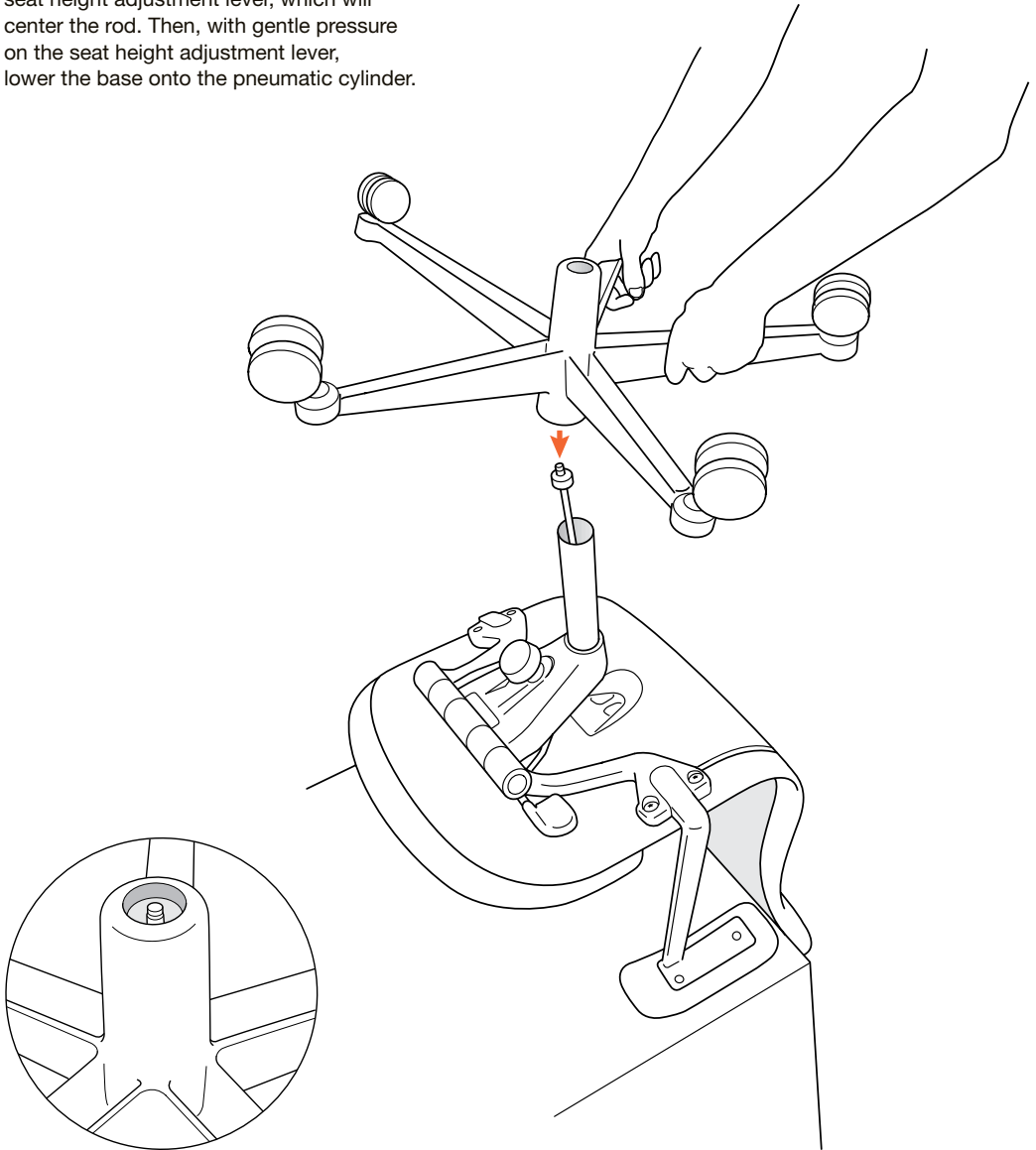
The Equa XR chair ships with its pneumatic cylinder in the lowest position. You need to raise the rod inside the pneumatic cylinder before attaching the base. To raise the rod, push down on the seat height adjustment lever on the seat bottom. Be aware that the rod will rise out of the pneumatic cylinder about 5 inches when you do this, so give proper clearance.



Step 3

Attach the base to the shell.

Once you raise the rod, you can lower the base onto the pneumatic cylinder as shown. Be sure to support the 1-piece shell during this step. If the rod does not poke through the hole in the center of the base, lift the base slightly (less than an inch) and gently push down on the seat height adjustment lever, which will center the rod. Then, with gentle pressure on the seat height adjustment lever, lower the base onto the pneumatic cylinder.



Step 4

Attach the base clip to the rod.

Place the base clip on the rod as shown in **Figure A**, with lip over the end of the rod. Push down on the lip and slide the base clip into place as shown in **Figure B**. When it clicks into place, you're done.

Set the chair down on its casters and take a seat.

Congratulations! You've just assembled one of the best-designed ergonomic sitting machines in the world.

⚠ WARNING. THIS IS VERY IMPORTANT. Make sure that the base clip is attached securely to the rod. Failure to properly attach the base clip may cause the chair to separate from the base during use or when moved. Separation of the chair from the base may cause injury to the user and/or damage to the chair.

Fig. A

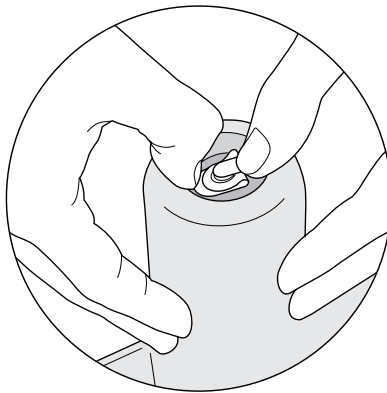


Fig. B

